

CENTRAL SHEET METAL  
INDUSTRIAL CONTRACTOR



# WORK DONE RIGHT.

Central Sheet Metal Co., Inc is an industrial sheet metal contractor that provides custom metal fabrication and air ventilation solutions to customers. Members of the Sheet Metal Worker's Local 20, we pride ourselves in high quality work and exceptional service. No matter the size of the project, our first priority is always customer satisfaction.

This service guide was designed to provide a view of the wide variety of services Central Sheet Metal Co., Inc can provide you with. It is not limiting the full scope of projects that we can complete. If you have a project inquiry that this guide does not include, please reach out to us and we will let you know if it falls under our capabilities.

## CONNECT WITH US



---

See more Project Examples at:  
[centralsheetmetalco.com/past-projects](https://centralsheetmetalco.com/past-projects)

# CSM HISTORY TIMELINE

For more than **50 years**, Central Sheet Metal has been an expert in industrial sheet metal .

**Black Coal Co.** is founded by Bob Leesman and Howie Kieran as a coal provider to homes. First location was on Central Avenue in Columbus, IN.

CSM turns into a union workforce and starts servicing the industrial market in **1964**.



Tom Johnson Sr, an eventual president of the company, helps CSM service it's first large industrial corporation in **1969**.

Tom "Keith" Johnson, current president, joins CSM in **1988**, bringing an expertise in sales and growing the company to what it is today.



CSM hires a new team to kick off their HVAC service and maintenance business in **2017**.

**CSM SERVICE GUIDE**



**Central Sheet Metal Co., Inc** is founded to replace Black Coal Co. as a residential HVAC provider. The name was derived from company location.

CSM moves to current location, 925 S Marr Rd for a bigger facility to handle more work in **1967**.

*Metal Fabricated Products co., inc.*

Tom Johnson Sr. starts complimentary components business called Metal Fabrication Co. in **1976** which still operates today!



CSM adds a Vicon Plasma Cutting table to improve expertise in metal fabrication in **2006**.



CSM finishes office remodeling to double the size and bring on new employees in **2019**!

# CONTENTS

## INSTALLATION SERVICES

Dust and Mist Collector Installation	5	
Industrial Ventilation Installation	6	
HVAC Ductwork Installation	7	

## CUSTOM FABRICATION

Sheet Metal Fabrication	8	
Miscellaneous Metal Fabrication	9	
Roof Curbs and Adapters	10	

## MAINTENANCE SERVICES

HVAC System Maintenance	11	
Dust and Mist Collector Maintenance	12	

## OTHER SERVICES

Design + Build	13	
Equipment and Machine Repair	14	

## CSM SERVICE GUIDE



# DUST AND MIST COLLECTOR INSTALLATION

## INSTALLATION SERVICES

We provide services to install any dust or mist collector equipment and all associated ductwork to help your facility run as efficiently as possible. We have a highly experienced team from project managers to field journeymen to assist with any dust or mist collector project from start to finish.

### DUST AND MIST COLLECTOR SERVICES

- Dust or Mist Collector Build and Install
- Dust or Mist Collector Ductwork System Install
- Dust or Mist Collector System Design





# INDUSTRIAL VENTILATION INSTALLATION

## INSTALLATION SERVICES

We work across the Midwest to provide some of the most exceptional ventilation systems around. Our customers trust us to install air ventilation services that exhaust all harmful pollutants from the operation floor to outside of the building and keep their facilities clean.

### INDUSTRIAL VENTILATION SERVICES

- Air Pollution and Compressor Exhaust Systems
- Vent and Fume Hood Systems
- Paint Booth Ventilation
- Make-Up Air and Cooling Systems
- Round Pipe and Ductwork Installation





# HVAC DUCTWORK INSTALLATION

## INSTALLATION SERVICES

We've been a HVAC provider since the 1950's, installing ductwork and equipment in many commercial buildings and industrial facilities to keep their air at a comfortable temperature. Examples include restaurants, office buildings, and manufacturing facilities.

### HVAC DUCTWORK SERVICES

- Square, Spiral, Round, Oval, and Rectangular Ductwork
- Grills, Registers, and Diffusers
- Fans, Dampers, and Louvers
- Commercial/Industrial Handling





# SHEET METAL FABRICATION

## CUSTOM FABRICATION

If you can describe it, we can fabricate it. We have all the in-house capabilities to provide custom metal applications coupled with our CAD/CAM design software. Capabilities include plasma table, press-brake forming, metal shearing, paint booth, welding, sheet metal rolling, welding, and punching.

### **SHEET METAL FABRICATION SERVICES INCLUDE BUT AREN'T LIMITED TO:**

- Material Handling Units
- Machine Guarding
- Storage Units
- Ductwork Fittings
- Carts
- Down-Draft Tables
- Brackets
- Industrial Metal Parts
- Shaker Trays
- Welded Round Pipe







# MISCELLANEOUS METAL FABRICATION

## CUSTOM FABRICATION

We provide custom fabrication services for the many different misc metals applications needed for jobsites and maintaining a facility. These can be anything architectural, ornamental, or light structural. Capabilities include CAD Design, plasma table, press-brake forming, metal shearing, welding, and paint booth.

### MISC METAL FABRICATION SERVICES INCLUDE BUT AREN'T LIMITED TO:

- Stairs
- Handrails
- Decorative Metal Signage
- Gates
- Ladders
- Storage Tanks
- Industrial Platforms
- Supports
- Industrial Tables
- Bollards





# ROOF CURBS AND ADAPTERS

## CUSTOM FABRICATION

We provide custom fabricated roof curbs and adapters to fit any size roof penetration or application. We have a highly experienced team that has been designing roof curbs and adapters for decades and are capable of fabricating the most quality metal standing seam roof curb or adapter on the market.

### ROOF CURBS AND ADAPTERS SERVICES

- Roof Top Units
- Skylights
- Smoke Vents
- Hatches
- Fans





# HVAC SYSTEM MAINTENANCE

## MAINTENANCE SERVICES

We provide services to keep your HVAC equipment running as efficiently as possible. As HVAC systems age, problems arise such as increased energy use, poor indoor air quality, and frequent breakdowns. We offer routine maintenance or on-call maintenance for when emergencies arise.

### HVAC SYSTEM MAINTENANCE SERVICES

- Preventative Maintenance Scheduling
- HVAC Equipment Replacement and Repair (RTU, AHU, Fans, etc.)
- HVAC System Diagnostics
- HVAC System Modifications and Upgrades







# DUST AND MIST COLLECTOR MAINTENANCE

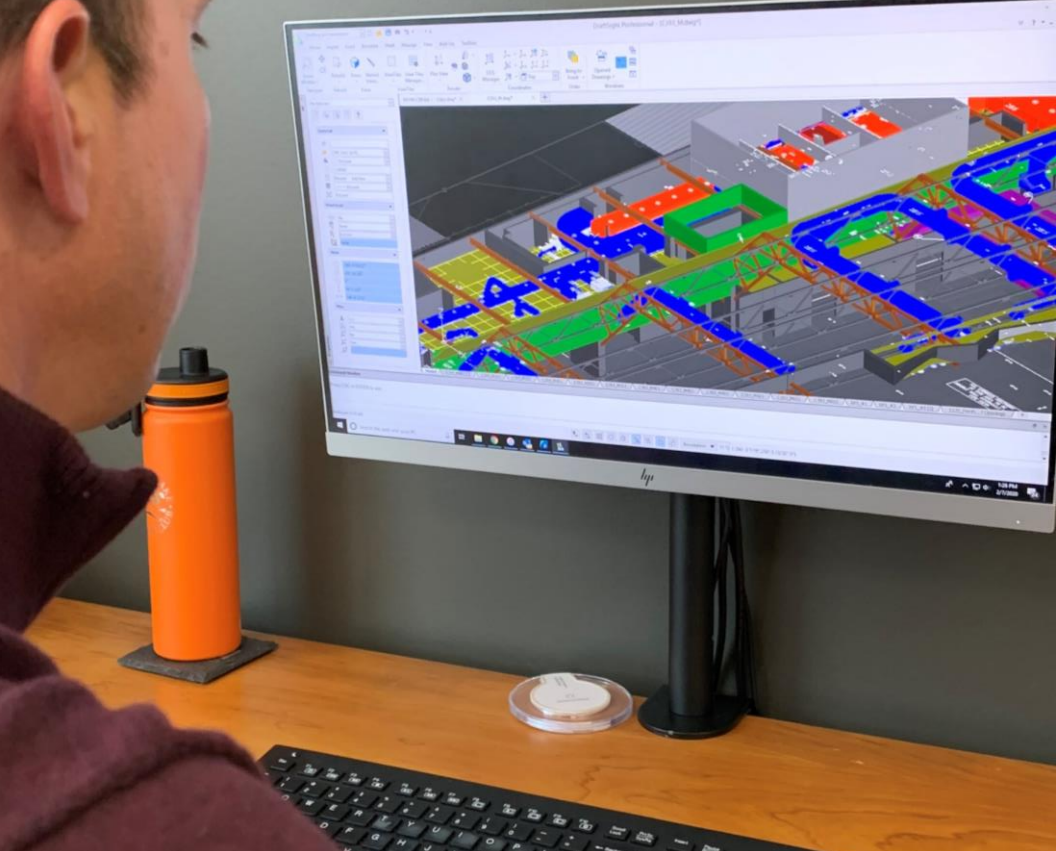
## MAINTENANCE SERVICES

We provide services to keep your Dust or Mist Collection systems running as efficiently as possible. Collector systems often run continuously to support ongoing production processes which causes filters replacement or collector repairs themselves. We offer routine maintenance or on-call maintenance for when emergencies arise.

### DUST AND MIST COLLECTOR MAINTENANCE SERVICES

- Preventative Maintenance Scheduling
- Filter Change Out and Replacement
- Collector Repair
- Collector and Ductwork System Diagnostics
- System Modifications and Upgrades





## DESIGN + BUILD

### SYSTEM DESIGN

We can help design new builds, remodels, and building upgrades. We work as an extension of your expertise in design, assisting in development of your air ventilation or custom fab concepts into fully functional, reliable, and cost-effective solutions for your operation. We have experienced staff in Auto CAD, Solid Works, and Vicon to support.

#### DESIGN + BUILD SERVICES

- Dust or Mist Collector System Design
- Industrial Ventilation System Design
- HVAC Ductwork System Design
- Custom Fabrication Design







**BEFORE**



## EQUIPMENT AND MACHINE REPAIR

### REPAIR SERVICES

We can repair any broken equipment or machinery that comes from a running a constantly moving production line. We have skilled employees on hand for any emergency repairs and also offer regular scheduled repairs for constantly running operations.

#### REPAIR SERVICES INCLUDE BUT AREN'T LIMITED TO

- Heavy Duty Trailers
- Material Handling Carts
- Industrial Racks
- Machinery
- Conveyors



The image shows a red header at the top with the word "NOTES" in white, bold, uppercase letters. Below the header is a white area with horizontal lines for writing. The lines are evenly spaced and extend across the width of the page.

**Central Sheet Metal started in the 1940s under the name Black Coal Co as a coal provider to homes. Realizing homes were more in need of a good HVAC system, the company made the switch to a HVAC contractor in the 1950s. Since then, CSM has grown into a union industrial workforce that services customers across the Midwest, helping them heat/cool their facilities, custom fabricate, and properly ventilate wasteful air.**

Our capabilities include everything from the design, to metal fabrication, to the installation and maintenance of air ventilation systems. We are located in Columbus, Indiana and serve customers mainly across the Midwest, although, we are capable of traveling anywhere across the US.

Learn more about Central Sheet Metal by visiting our website:  
**[centralsheetmetalco.com](http://centralsheetmetalco.com)**

**Central Sheet Metal Co., Inc**  
925 South Marr Road  
Columbus, Indiana 47201  
(812) 372-9976 - Office  
**WORK DONE RIGHT**

